

# DEDHAM PARISH MAGAZINE



*December 2019*

*& January 2020*



# DEDHAM PARISH MAGAZINE

FIRST PUBLISHED IN 1876 DECEMBER 2019 & JANUARY 2020

The deadline for magazine entries is the 14th of the month

## DEDHAM PARISH CHURCH

[dedham-and-ardleigh-parishes.org.uk](http://dedham-and-ardleigh-parishes.org.uk)

Antony Wilson Vicar  
☎ 323 919

Merv McKinney Assistant Minister  
☎ 323 919

### PARISH OFFICE

Claire Arculus Parish Administrator  
☎ 322 136

Charlotte Parker Assistant Parish Administrator  
& Safeguarding

Assembly Rooms ☐ stmaryda@gmail.com  
High Street, Tuesday 9-11am  
Dedham CO7 6HJ Thursday 11-1pm

### CHURCH WARDENS

Suzanne Woods ☎ 01255 870640

Peter Wilson ☎ 323 179

### MUSIC

Antony Watson Director of Music  
☎ 322 425

## DEDHAM PARISH MAGAZINE

### Editor

Charlotte Parker ☐ dedhameditor@gmail.com

**& Advertising** ☐ dedhamadvert@gmail.com

**Can we help?** Sometimes things in life can just get too much to cope with on your own...

**Psalm 34:18:** The Lord is close to the broken-hearted and saves those who are crushed in spirit. If you would like some support or know of any one who would, please contact: Ann Shaw ☎ 322 192 or Christine Mingay ☎ 230 723  
If you have been bereaved or know of anyone who has, please contact

Vee Druit ☎ 322 000 or Ruth Higginson ☎ 322 598

**First Steps:** Want to get back involved with church but don't know where to start?

## MAGAZINE CONTENT

Front Cover: Dedham in Winter  
(St Helena Hospice Christmas card)

2. Contacts/content
- 3-4 Services & church events
5. Dedham Assembly rooms & Duchy barn
- 6-7 Viewpoint
7. Jonathan Aitken visit
- 8-9 Christmas services & Alpha

### What's on Dedham:

10. Dedham Christmas
11. Christmas Tree festival

### Features & organisations

12. Dedham Primary School
13. Dedham Parish Council
14. Dedham Therapy Farm & Royal British Legion
15. Dedham Church painting
16. Gardening notes
17. Medical matters
18. Feature: Gummer's Shop
19. Dedham lunch

### What's on local:

- 20-22 What's on!
22. Dedham Films
23. WEA & Dedham Quiz
24. Local events
- 25-26 Financial update

27-48 ADVERTISING

Throughout the magazine local telephone numbers omit ☎ 01206 area code unless otherwise stated.



## SERVICES December 2019

### Sunday 1st

8am	Holy Communion	Dedham
9.30am	Rise N Shine	Dedham
11am	Morning Prayer	Ardleigh
5pm	Evensong	Dedham

### Sunday 8th

8am	Holy Communion	Ardleigh
9.30am	Holy Communion	Dedham

### Sunday 15th

8am	Holy Communion	Dedham
11am	Eucharist	Ardleigh
3pm	Sunday@3	Ardleigh
6pm	Carol Service	Dedham
6pm	Carol Service	Ardleigh

### Thursday 19th December

5.30pm	Business Carols	Dedham
--------	-----------------	--------

### Sunday 22nd

8am	Holy Communion	Ardleigh
9.30am	Morning Praise	Dedham

### Christmas Eve

3.30pm	Crib Service	Dedham
4pm	Christingle & Crib Service	Ardleigh
5.30pm	Crib Service	Dedham
11pm	Midnight Mass	Ardleigh
11pm	Midnight Mass	Dedham

### Christmas Day

8am	Holy Communion	Ardleigh
10am	Family Communion	Dedham

### Sunday 29th December

11am	Joint Morning Prayer & Baptism	
------	--------------------------------	--

BCP: Book of Common Prayer / CW: Common Worship



### FLAG DAYS:

**Sunday 1st December**

Advent

**Wednesday 25th December**

Christmas

## Weekly Midweek Services

*Tuesday Morning Prayer at Dedham at 10.30am / Thursday Evening Prayer at Ardleigh at 5pm*

**Sunday Night Skeptics at the Sun Inn, Dedham**

Sunday, 1<sup>st</sup> December - 8pm

**Men's Breakfast, Saturday,** 7th December, 9am, The Vicarage

**Dedham Lunch Club,**

Monday 2nd December, 12.30pm, Essex Rose

**Ardleigh Friendship Grp,** every 2<sup>nd</sup> & 4<sup>th</sup> Tuesday 10am-

12pm during winter  
Ardleigh Church

**Dedham Christmas**

**Market, Saturday 7th** December, 3-6pm

& Tree festival 7th to 12th  
**Jonathan Aitken, Speaking** on Sunday 8th December at 5pm, Dedham church

## From the Register

### Burials

31 October, Barbara  
Ava Catherine Ward

7 November, George  
Seymour Curtis

20 November, Thomas  
Mackenzie Firth Bernard

## SERVICES January 2020

### Sunday 5th, Epiphany

8am	Holy Communion	Dedham
9.30am	Rise N Shine	Dedham
11am	Morning Prayer	Ardleigh
5pm	Evensong	Dedham

### Sunday 12th

8am	Holy Communion	Ardleigh
9.30am	Holy Communion	Dedham

### Sunday 19th

8am	Holy Communion	Dedham
9.30am	Matins	Dedham
11am	Eucharist	Ardleigh
3pm	Sunday@3	Ardleigh

### Sunday 26th

8am	Holy Communion	Ardleigh
9.30am	Morning Praise	Dedham
5pm	Revive@5	Dedham

### Sunday 2nd February

8am	Holy Communion	Dedham
9.30am	Rise N Shine	Dedham
11am	Morning Prayer	Ardleigh
5pm	Evensong	Dedham

BCP: Book of Common Prayer / CW: Common Worship

### Weekly Midweek Services

Tuesday Morning Prayer at Dedham at 10.30am / Thursday

Evening Prayer at Ardleigh at 5pm

### Dedham Lunch Club

Monday 6th January 12.30pm, Essex Rose Tea Room

**Sunday Night Skeptics at the Sun Inn, Dedham**

Sunday 26th January- 8pm

### Men's Breakfast,

Saturday, 1st February, 9am, The Vicarage

**Ardleigh Friendship Group**, every 2<sup>nd</sup> & 4<sup>th</sup> Tuesday

10am-12pm during winter, Ardleigh Church

If you would like a lift to church contact

Ann Shaw ☎ **322 192** or

Ruth Higginson ☎ **322 598**



## Hustings at Dedham Church Monday 2nd December at 7.30pm

Come and hear  
candidates from the  
Conservative, Labour,  
Liberal Democrat &  
Green Parties speak and  
answer your questions

My wife and I came to Dedham in 1972 and we ran the pharmacy which was then part of Churchgate House, Royal Square. In 1993 we moved the pharmacy business to the old Martin Hogg's China Shop which in turn occupied the premises of Spearings, opposite the main church gate. We sold the business in 1997 and retired to live in Churchgate House.

My wife passed away very recently, and I wanted to let you know as many of you may remember Phyllis who was the 'front of shop' hostess while I toiled away in the dispensary.

**Jack Phillips**

## Assembly Rooms

### DECEMBER

**Starlight Dancing** Mondays 9.00-12 am

**Tom Stapleton Choral Academy**

Mondays 4-7pm & Tuesdays 5.15-8.15

**Art Classes** Tuesdays 9.30-3 pm

**Sounds Right** Thursdays am

**Brownies** Thursdays 5.30-7pm

**Dedham Youth Club** Fridays 7 - 9pm

**Antiques Fair**

Sunday 1 December - All Day

**Horticultural Society Meeting**

Wednesday 4 December 7.30 pm

**Craft Fair**

Saturday 7 December - All Day

**Dedham Films**

Wednesday 11 December - 7pm

**General Election - Polling station**

Thursday 12 December - 7am - 10pm

**Tom Stapleton Choral Academy**

**Concert** Thursday 19 December

### JANUARY

**Starlight Dancing** Mondays 9.00-12 am

**Tom Stapleton Choral Academy**

Mondays 4-7pm & Tuesdays 5.15-8.15

**Art Classes** Tuesdays 9.30-3 pm

**Sounds Right** Thursdays am

**Brownies** Thursdays 5.30-7pm

**Dedham Youth Club**

Fridays 7 - 9pm

**Dedham Community Christmas**

**Lunch** Saturday 4 January - 12 noon

**Antiques Fair**

Sunday 5 January - All Day

**Dedham Art Society**

Thursday 9 and 23 January 2 - 4pm

**Village Quiz**

Saturday 18 January 7pm

**Dedham Films**

Wednesday 15 January - 7pm

## DUCHY BARN

**Coffee Mornings:** Tuesdays,  
Thursdays & Fridays 10.30 -12pm  
**Bridge in Dedham:** Wednesdays,  
2pm-5pm, Thursdays,7pm-10pm  
**Youth Club:** Fridays, 7.30-9.15pm

### MEET UP MONDAYS

@

### THE SUN INN, DEDHAM



DO YOU FEEL LIKE THE WEEKEND HAS DRAGGED?  
ARE YOU FED UP WITH YOUR OWN COMPANY?  
MAYBE YOU ARE NEW TO THE AREA?  
YOU ARE INVITED TO COME ALONG & ENJOY  
A FREE CUPPA & SOME FRIENDLY CHAT.  
WE'RE HERE FOR TEA, COFFEE AND CAKE AS PART OF  
#MEETUPMONDAYS #DONTBEONYOUROWN

10.30AM - 12PM EVERY MONDAY

For information and to make a booking  
for the **Assembly Rooms** please  
contact:

Tracy Woods ☎323921 ✉  
[dedhamassemblyrooms@gmail.com](mailto:dedhamassemblyrooms@gmail.com)

**The Barn** can be hired for small  
private events, parties etc  
Details of hire can be obtained from  
Anne Rowledge ☎322394



Follow us on facebook  
Dedham and Ardeleigh parishes

## How is your Christmas shopping going?



You may not yet have started, or you may be all organised and everything complete?

Sometimes I catch sight of a gift much earlier in the year and buy it because I just know it's the perfect thing for a loved one. Then I have to hide it really well, remember that I've bought it and where it is to be ready for wrapping on Christmas Eve!

Some gifts are more meaningful than others, some have taken more investment of time and care in being selected. So think about Christmas morning or whenever you share gifts, and think about the moment you will give the most meaningful gift you have bought this year. You hand it to your friend or loved one and they reach out to take it from you. The gift is between you, and in that moment the gift is far more than what's inside the box, the gift is you.

This is because you have put yourself into that gift, it communicates something about you and what you feel about the person you are giving it to. The whole flow of give and take is

about handing yourself over to someone you love in the form of that gift. When it's received in a sense you are being received too. There is no better feeling in the world when you have got it right.

Now think about being on the receiving end. Of course some gifts we receive don't quite touch us as much if we're honest and we may wonder why they were given to us?

But once in a while, I hope at least once every Christmas, we receive a gift that truly touches us. It is an experience of grace, of getting far more than we deserve. To receive this sort of gift is to be seen, known and valued over and above all expectations. We're touched not just by the value of the gift but by the valuation of the giver. They really shouldn't have but they wanted to. They wanted to show us that they love us.

This is what makes Christmas -or at least the idea of Christmas - such a welcome break from the rest of our lives. For most of the year we work hard, we strive even, we have to earn respect, status, our place, and for some, a seat in parliament?

But none of these things can really give us what we most crave - we want to be loved.

This is the truth which is at the heart of what Christians believe about Christmas. *Love Come Down.*

Earlier this year we celebrated the 50th anniversary of the first moon landings, and were reminded afresh of that iconic statement made by Neil Armstrong 'one small step for man one giant leap for mankind'. In the margins there were many other quotes from astronauts including this one from James Irwin which for me captures the importance of the most amazing Christmas gift of all history - 'Jesus walking on the earth is more important than man walking on the moon'.

Please come and join us as we celebrate the gift of *Love Come Down* this Christmastime, you'll find details of all the Christmas services and events later in the magazine, and in the New Year we are once again running the **Alpha course**, which is a wonderful

opportunity to explore more.

Before all that, and against the backdrop of a general election come and hear ex-Cabinet minister **Jonathan Aitken** share his remarkable life story on **8th December at 5pm**

*A very Happy Christmas  
to you all*

*Reverend Antony Wilson*



## **Jonathan Aitken: From Politician to Prisoner and now Prison Chaplain**



Come and hear his remarkable life story at Dedham Church on **Sunday 8 December at 5pm**.

Jonathan Aitken is a former Member of Parliament, Cabinet Minister, and ex prisoner. He is now a Prison Chaplain at HMP Pentonville.

Jonathan grew up in Suffolk and his first job was on the EADT so East Anglian holds a special place in his heart.

He is the author of seventeen books including award winning biographies of John Newton, the author of *Amazing Grace*; former US President Richard M Nixon and former Prime Minister Margaret Thatcher.

He is also a well-known broadcaster and columnist for the Times and other newspapers.

Ordained in June 2018 at St Paul's Cathedral by the Bishop of London, he now combines being a curate at St Matthew's Westminster with being a chaplain at HMP Pentonville."

*The Revd Jonathan Aitken*



*Carols by candlelight*  
Sunday 15<sup>th</sup> December  
6pm at both churches

*Carols for businesses*  
Thursday 19<sup>th</sup> December  
at 5.30pm

## *Christmas Services 2019*



*Christmas Eve Crib Services*  
At Dedham Church at 3.30pm & 5.30pm  
At Ardleigh at 4pm (with Christingles)

*Midnight Mass*  
At both churches at 11pm

*Christmas Day*  
8am Holy Communion at Ardleigh  
9am Roman Catholic Mass at Ardleigh  
10am Family Communion at Dedham



## Explore More

Life. Faith. Meaning.



### Everyone has

**Questions** We believe that everyone should have the chance to explore the Christian faith, ask questions and share their point of view; wherever they are in the world.



**Alpha** Is a series of sessions exploring the Christian faith. Each evening looks at a different question around faith and is designed to create conversation.

**First up there's food**

**Then there's a talk**

**Followed by a discussion**

**Alpha** here starts on

**Tuesday 14<sup>th</sup> January 2020**

**Lunchtime session at 12.30**

**Evening session at 7pm**

**At Dedham Assembly rooms**

*If you are interested in joining Alpha please contact the Parishes office  
01206 322136 [stmaryda@gmail.com](mailto:stmaryda@gmail.com)*

**Try Alpha** – see what others have said:

*Lynda writes ....* Having been a 'lapsed' Christian and believer for many years, I was intrigued when a dear friend invited me in January to join her at a small, informal gathering (that evening, not much time to think about it!) to introduce the new Alpha Course that would soon begin in Dedham. The course comprised well-produced films and dialogue followed by discussion amongst the group about faith, beliefs, history and the place of God, Jesus and the Church in contemporary life and society. The people in the group had a range of experience, from ministers to those with many questions and uncertainties, like myself.

At the end of the ten weeks I was determined to continue the journey of understanding and discovery that had begun, so as Lent immediately followed, my contribution, instead of giving up something, would be to regularly attend Sunday Church services to help me understand how

Christianity and the Church work in my community. Another result of attending Alpha was the welcome I received from the Church 'family'.

Attending the Alpha Course has, I believe, restored and rebuilt my faith in God, Jesus and the Church, with the help and understanding of kind and caring new friends.

*Jason writes ....* I thought alpha was amazing because: It broke down the journey into bite size chunks. It set you simple reading and thinking tasks to reflect on after each session which helped to shape follow on questions. I liked that it started the alpha journey by establishing the facts, as this allowed us a place to hang the harder to understand facts on. I looked forward to each evening; the facts, the food, the fellowship and the faith made each session a fun journey of it's own . Meeting new people also on their journey of faith allowed me to see others point of view which also helped me to shape my own.

# Dedham Christmas Market

## Saturday 7th December

3 to 6pm

Santa's grotto in the Marlborough Pub,  
Cheese & Pie man, singing, Norwegian bakers,  
BBQ, decorate a gingerbread biscuit,  
games stalls, jewellery, Christmas decorations,  
raffle with lots of amazing prizes to be won,  
children's books, greenery including willow &  
wreaths... and much much more...

*Raising funds for Dedham Primary School*

## Christmas Craft Market

Dedham Assembly Rooms, 10am to 4pm

All hand made, local, top quality contemporary  
arts & crafts, including pop up cafe

## St Helena Hospice Shop

On the High Street, will be staying open until 7pm

Professional singer from 4 to 6pm

High end clothing available to buy,  
Christmas carols, lucky dip, hot chocolate  
& baileys, mince pies & lots of Christmas gifts



## Dedham Christmas Tree Festival

Saturday 7th to Thursday 12th December

Entries are invited from all!

- Entry fee:** £3 per tree
- Deadline for entry forms:** Friday 22nd November 2019
- Trees to be..**
- Delivered to church by:** Friday 6th December 3pm-6pm
- Collected no later than:** Thursday 12th December by 4pm

### ***Tree specifications:***

- \* No trees taller than 5ft
- \* LED battery operated lights only *to be provided by participants*
- \* Trees must be complete when dropped off  
*no final adjustments can be made afterwards*
- \* Trees can be on any theme or subject
- \* No toxic or hazardous substances to be used
- \* No offensive entries will be allowed



**Please return the entry form (copies available at the back of the church or on line [https://dedham-and-ardleigh-parishes.org.uk/Groups/285356/Latest\\_News\\_and.aspx](https://dedham-and-ardleigh-parishes.org.uk/Groups/285356/Latest_News_and.aspx)) with the £3 entry fee by Friday 22nd November 2019 to:** Dedham Parish Church Office,

Assembly Rooms, Dedham High Street, Dedham, CO7 6DE

Or submit your entry by e-mail to: [stmaryda@gmail.com](mailto:stmaryda@gmail.com)  
Visit our facebook page [@DedhamandArdleigh](#)

St. Mary's Church Dedham is very grateful to the Hunnaball's Family Funeral Group for once again sponsoring the Christmas tree which will be in place for all the services over the Christmas period"

## Dedham Primary School

All children in our school are encouraged to take on positions of responsibility and leadership. Currently we have a School Council, an Eco-Team, a Worship Team and a team of Inclusion Ambassadors as well as having all year six children helping with lunchtimes.

Our Inclusion Ambassadors work closely with the Multi-Schools Council which aims to break down negative perceptions about children with disabilities or special needs through child engagement. The Inclusion Ambassadors attend meetings regularly with other Essex schools to contribute and share ideas with other children and we recently welcomed Kierran Pearce, the leader of the council, to lead sessions on understanding autism for all pupils and staff.

There is very rarely a week in the school diary where we don't have curriculum enrichment opportunities happening for our children. Just in the last month, years four, five and six have all completed a course in CPR with Essex Air Ambulance, we have had a visit from Mr Baxter (Manningtree High School) who led a STEM afternoon exploring the rate of flow in aqueducts, and Class 4 visited Colchester Castle to learn all about the Roman invasion and Boudicca.

December is always an exciting month in a primary school calendar and, as in all years, Christmas carols and glitter (eco-friendly of course) start to drift down the corridors as soon as Remembrance events are completed!

This year's Key Stage 1 play is entitled 'Tinsel and Tea towels' and it gives a behind the scenes look at what really happens in schools as they rehearse and put on a Nativity play. This year, the school is not only excited to see who will be Mary and Joseph but also who will be the head teacher!

Wishing you all a very happy Christmas and we look forward to seeing you in 2020.

*Laura Valentine*

## Dedham Parish Council

### VE day

#### commemoration celebrations

Planning is well under way to ensure that Dedham commemorates the 75<sup>th</sup> anniversary of Victory in Europe Day in May 2020 in style.

There will be national and local events and Dedham Parish Council is providing a Tea Party for senior residents which will take place on Friday 8<sup>th</sup> May from 3pm-5:30pm in the Assembly Rooms. The tea will be provided by the Essex Rose and there will be readings plus songs by the Cooper's Lane Choristers. If you don't live in Dedham but have a long association with the village and would like to be invited, please let us know.

This is only one of several events over the weekend that are planned for the village. On Saturday there will be a family party on the green in front of the church with a 'Forties' Trio and other entertainment. You can buy burgers or hot dogs from Evans, the Butcher or bring your own picnic. More details will

be provided in the Parish Magazine nearer the time.

If you would like to be invited to the Seniors' Tea Party please fill in the form below and return to the box outside the DPC office in the Dedham Art & Craft Centre by the end of January. We would particularly like to hear from those of you over 70. If you could provide a lift for a friend or neighbour please let us know.

**Parish Council meeting**

The next meeting will be on Monday 2 December 2019 in the Duchy Barn. Please join us for a glass of wine and mince pies! It is a good opportunity for anyone who may be interested in standing as a Parish Councillor at the next local elections due in May 2020 to meet the current team in an informal setting!

[clerk@dedhamparishcouncil.co.uk](mailto:clerk@dedhamparishcouncil.co.uk)

**Invitation to a  
Dedham Tea Party  
To celebrate WW2 VE Day 75 years ago  
In the Assembly Rooms  
On Friday 8th May 2020 3pm-5:30pm**

Name(s): .....

Address(s): .....

.....

Post Code: ..... Telephone No: .....

Lift required: Y/N Date of birth: .....

Dietary requirements

.....

.....

.....



**Frosty**

**Dedham Therapy Farm!**

At the weekend after 11am we open our gates to the public for unsupervised visits. We ask only for a small cash donation in return for entry, and visitors can hand feed the animals and visit our gardens.

**Dates the farm is open to the public over Christmas (11am-3pm every day)**

December: 21st, 22nd, 23rd, 24th, 26th, 27th, 28th, 29th, 30th, 31st

January: 1st, 2nd, 3rd, 4th, 5th

Find out more at

[www.dedhamtherapyfarm.org](http://www.dedhamtherapyfarm.org)

Or visit our 'stall' in the Sun Inn pub during the Dedham Christmas Market on Sat 7th Dec, where we will be selling Christmas gifts to raise funds to continue our work in 2020.



**The Royal British Legion  
Poppy Appeal 2019**

I should like to take this opportunity to thank everyone who gave so generously to this years Poppy collection. A special thanks to those who gave their time helping with the door to door and in other ways to ensure the success of this important charity.

The amount raised so far in the Dedham area was £3277; about 40% of this was collected by the volunteers who knocked on your door! The total is about £300 less than last year. This was not, perhaps, surprising as last year was the centenary of the end of the First World War, and next year will be 80<sup>th</sup> Anniversary of Victory in Europe.

This amount includes the contribution from "Gift Aid" about £70.

Gift Aid was slightly less than last year and can make a real contribution. Please remember that it costs you, the donor, nothing! The additional 25% comes from the Government as the Legion recovers the tax you paid!

If anyone requires wreaths or other items for next year and which are available from the Legion, please let me know and I will arrange for them to be ordered and delivered to my home for you to collect.

I should be grateful for more help next year to collect from Forge Street and Parsons Field and if you would like to help please telephone me, the number is 01206321241.



**LAST  
OPPORTUNITY**  
TO WIN THIS ORIGINAL  
OIL PAINTING  
of  
ST MARY the VIRGIN  
CHURCH – DEDHAM

**DRAW WILL BE MADE  
ON 31 DECEMBER**

This 2019 Oil Painting by  
Hugh Beattie was  
commissioned by the  
Friends of Dedham Church  
and could be yours

**ONLY A FEW OF THE ORIGINAL 100 NUMBERED SIGNED  
PRINTS REMAIN FOR SALE at £25 each.**

We will be drawing a number and the owner of the print bearing that number will win the original oil on canvas painting. The winner will be announced in the Parish Magazine. To buy a print and be entered in the draw call 01026 322851 or email [david.jewell@crown-consultancy.com](mailto:david.jewell@crown-consultancy.com)

Hugh Beattie is a traditional oil painter specialising in portraits, architectural landscapes as well as being a well established war artist within the British Army. His Studio is in Eight Ash Green and paintings are also on display on line at [www.jhlb.co.uk](http://www.jhlb.co.uk)

## Gardening News

### CUT BACK CHRISTMAS

So Christmas and the New Year are fast approaching but since all the rain in November (and the competing desire to spend weekends by a roaring fire) kept me out of the garden, I'm hoping for a couple of drier months and the chance to catch up while on the break from work.

Winter is a good time for cutting back and pruning fruit trees, and I have several: apples *Malus domestica* 'Fiesta' trained as step (trip) overs, 'Bloody Ploughman' and 'St Edmunds Pippin' and pears *Pyrus communis* 'Concorde', 'Conference' and 'Beurre Hardy'.

I also have plums *Prunus domestica* 'Valor', 'Laxton's Delicious' and 'Anna Spath' and a peach *Prunus persica* 'Dymond', but don't prune these (or any 'stone' fruit including cherries) until the height of summer to avoid the dreaded 'silver leaf' fungus which is more commonly spread in damper conditions and enters through wounds (like those as a result of pruning). For apple and pears though, winter pruning will help fruiting and manage the shape of your tree or trained form (like a stepover or espalier). First check if you have a spur- or tip-bearing cultivar. If you don't know which you have (and can therefore look it up), you'll need to see how it fruits: tip-bearers fruit at the end of shoots produced the previous year and pruning them will remove next year's harvest. Fortunately, all but one of my trees are spur-bearers.

So ready your sharp and clean secateurs and look over the tree for any crossing, weak and rubbing branches, as well as (you'll remember this from one of Elizabeth's previous columns) the dead, diseased and damaged. These you should cut out. Then look at the main branches

and shorten each by about a third, thinking about which way the bud points; ideally facing out so that when it grows the tree maintains an open framework of branches. However, leave any sideshoots (laterals) that grow off these main branches as they will develop fruit buds.

January is also the time to cut back vigorous wisteria which will ramble and take over anything in its way if left unchecked. I have a blue and a white variety of *Wisteria sinensis* either side of the door to my shed and it gets winter pruned in January. In August I cut the whippy shoots grown over the summer back to six leaves to encourage flower buds to form. Now I cut these back again to two buds, which tidies the plants up and helps to ensure that when the flowers bloom, they aren't obscured by leaves.

Winter is also bareroot season when we can buy usually cheaper, half-dead looking trees and shrubs including roses. Planting them now, while they are dormant, means they are ready to get off to an early start when the soil warms up again in spring. This year I'm planting some pussy willow *Salix caprea*, so my honeybees can enjoy some early nectar and pollen. If you're ordering online, just check the roots of the plants when they arrive to check they are still damp. If they feel a bit dry and you're not planting them immediately, dip them in water for about 10-15 seconds, put them in a plastic bag and keep them somewhere dark and cool – they should be fine for a week or two, just keep checking the roots. If you have a spare patch of ground, you can also 'heel' the plants in until you are ready to put them in their final position.

Finally, if you're looking for a small job, remove any foliage on hellebores that is marked with black blotches – hellebore



leaf spot (more fungus) – and bin it; don't put it on the compost heap. This will also make the blooms more visible as they emerge in spring.



Have a happy horticultural Christmas everyone.

**Elliott Frisby**

*Dedham's Horticultural Society takes a break from its speaker evenings in January, but hopefully we'll see you at the Assembly Rooms on Wednesday 5 February, 7.30pm when Debs Hart talks about willow weaving.*

## Ardleigh & Dedham Surgery

We are coming up to the busy Christmas period where many of us will be meeting up with groups of friends and relations. This increases the risk of flu and pneumonia transmission so make sure your vaccines are up to date.

The surgeries and dispensary will be closed for the three bank holidays only (Christmas Day, Boxing Day and New Year's Day). **The last date for ordering repeat medication to be collected before the Christmas break will be the 19<sup>th</sup> December**, please don't over order as this will not be necessary.

Please note, from February our dispensary will open at 9am on Wednesdays, this is

to enable dispensing staff to complete weekly stock checks. Opening times for the rest of the week remain unchanged.

Try not to book routine reviews over the Christmas period (unless your normal working hours make these the only times you are available!) NHS 111 services will be available on the Bank Holidays so if you have a serious illness requiring advice please call them.

May we remind those of you fortunate enough to be planning holidays abroad that you need to complete a Travel Form (available on our website or from the surgeries). The completed form should be returned to us **at least six weeks before you plan to travel** so that we can provide all vaccinations needed.

For those of you staying at home, cases of Lyme's disease in the UK are increasing, there were over 8,000 cases in 2019. Lyme's disease is caused by bacteria spread through the mouth of ticks, most prevalent in long grass and woodland/forested areas. It can cause serious long term health problems, so if you find a tick on your skin, or think you were bitten, make an urgent appointment with one of the nurses. A blood test can confirm the disease.

For further information go to [lymediseaseuk.com](http://lymediseaseuk.com)

Patient Participation Group: We are hoping to reinvigorate this when our new Practice Manager starts at the end of November. If you are willing to join and can spare an evening every month or so we would love to hear from you. We would like to make the group more representative of our patient profile, so young people and those with young families would be very welcome.

Wishing you all a **Merry Christmas** and a **Happy and Healthy New Year.**

## Gammer's shops

A prominent shop in the centre of Dedham in the early years of the twentieth century was H. Gammer's Stores in Royal Square, in what is now Loom House. Henry Gammer is listed in Kelly's Directory as trading from 1894. This is presumably the date when he installed his ambitious new frontage, substituting tall shop windows for the existing bay windows on either side of the front door, which was also redesigned. Like many Dedham shops at the time Gammer's sold a wide variety of merchandise, advertising Grocery, Tea and Provisions and also Drapery, Millinery, Clothing and Boots. The business did not last long here but the shop windows remained in place for nearly fifty years. They are clearly shown in a photograph taken at the dedication of the War Memorial in 1921. The present bay windows installed in the late 1940s were derived from the earlier ones seen in a photograph of Loom House (then Church House) taken in the 1880s.



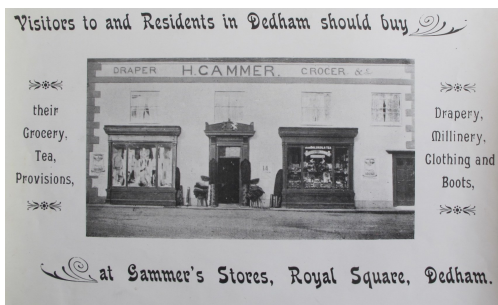
*The surviving shopfront of the former Gammer's Stores, seen on the occasion of the dedication of the War Memorial in 1921*

In 1907 Henry Gammer moved his shop to Ivy House (then Ivy Lodge), where he lived with his wife, two sons (at least one of whom worked as grocery assistant in the shop) and two daughters. As well as his previous merchandise, he now offered Modern and Antique Furniture and besides the shop, he ran a Tea Garden behind the house. This offered Light Refreshments and Teas to cater for the increasing number of day visitors to the village at this period, who began to come out from the towns on bicycles or in horse-drawn charabancs.



*Loom House (then Church House) in the 1880s, showing its original bay windows*

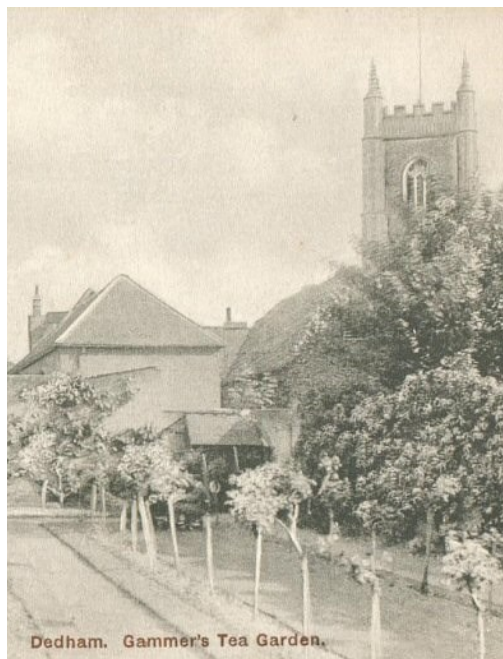
Ted Eley told me that at a time when Dedham's residents were mostly Conservative and Church, Henry Gammer was a strong Liberal and Non-Conformist. At election times he got so keen on promoting his views that he lost customers. Perhaps that was the reason why his business came to an end in 1913, when he ceased trading and sold the house to William and Mary Langton. Their daughter-in-law, the late Daphne Langton, remembered that a



Henry Gammer's new shopfront, probably dating from 1994



Henry Gammer's shop at Ivy House (then Ivy Lodge), where he traded between 1907 and 1913



Gammer's Tea Garden behind Ivy House in the early 20th century

condition of the sale was that the original sash windows which he had removed should be reinstated. One can

still make out the shape of the shop window in the brickwork to the left of the front door.

**@Lucy Archer**

## Dedham Community Christmas Lunch



The Community Christmas lunch will be held on Saturday 4<sup>th</sup> January

The lunch is free to any residents or former residents of Dedham who are over 60. The

aim of the lunch is to bring together residents, friends and neighbours during the festive period. The Christmas Lunches have been held for over 30 years. If you would like to be added to the list of invitees for this year's lunch please contact either Miles on 07802889899 or Tracy on 01206 323921



Competing *Cinderellas* at The Mercury Colchester and at the Regent Ipswich

### CHRISTMAS SHOWS

**Thursday 28 Nov to 1 Feb**

**Aladdin**, New Wolsey Theatre, Ipswich at various times.

**Saturday 30 Nov to 5 Jan**

**Cinderella**, Mercury Theatre, Abbey Field, Colchester.

**Wed 4 to 7 Dec**

**Treasure Island** by Ben Crocer, Headgate Theatre Productions, Colchester, 7pm and matinee.

**Sunday 8 Dec**

**Dickens: A Christmas Carol** Robert MacCall tells the story, Headgate Theatre, Colchester, 7.30pm.

**Thu 12 to 13 Dec**

**"Little" Red Riding-Hood** University of Essex student panto, Lakeside Theatre Colchester, 7.30pm.

**Sat 14 to 31 Dec**

**Cinderella**, Regent Theatre Ipswich, at various times.

### CHRISTMAS MUSIC & CAROLS

**Saturday 7 Dec**

**Clacton Choral Society**, St James's Church, Clacton, 4pm.

**JS Bach: Advent Cantata** - and Christmas music, Ipswich Chamber Choir, St Mary-le-Tower, Ipswich, 7pm.

**Lexden Choral Society**, Lexden Church, 7.30pm.

**Christmas Market & Concert**

Market starts at 4pm, concert at 6pm, Pimlott Foundation, Old House, Great Horkesley.

**Tiptree Choral Society**, St Luke's Church Tiptree, 7.30pm.

**Sunday 8 Dec**

**Colchester Choral Society**, St Botolph's, Colchester, 7.30pm.

**Kelvedon Singers**, Boxted Church, 6.30pm.

**Czech Baroque Christmas:** -

Psalmody & Essex Baroque Orchestra, Suffolk Villages Festival, St Mary's Church Harkstead, Ipswich, 6pm.

**Monday 9 Dec**

**Witham Singers**, United Reform Church, Witham, 7.30pm.

**Tuesday 10 Dec**

**Ipswich Operatic and Dramatic Society**, St Peter's by the Waterfront, Ipswich, 7.30pm.

**Friday 13 Dec**

**A Magical Musical retelling of Charles Dickens's A Christmas Carol.** Booking: 01255 870072, Wix Church, near Manningtree.

**Saturday 14 Dec**

**Hadleigh Choral Society**, Hadleigh Church.

**Britten: St Nicholas**, Phoenix Singers, Framlingham Church, 7pm.

**West Bergholt Concert**

**Band**, Coggeshall Church, 7.30pm.

## OTHER MUSIC

**Friday 20 Dec**

**Bach: Christmas Oratorio**, parts 1-3 and 6, Aldeburgh Voices, Snape Maltings.

**Sunday 1 Dec**

**Kingfisher Ensemble**, Lion Walk Church, Colchester, 2.45pm.

**Saturday 7 Dec**

**Messy Messiah** - with Bury Cathedral's In Harmony Trust, & Cantus Firmus, St John's Church, Ipswich, 6.30pm.

**CSO Wind**, Colchester Symphony Orchestra, St Botolph's, Colchester, 7.30pm.

**Tuesday 10 Dec**

**Recital by Ian Ray**, Colchester Moot Hall Organ, Colchester, 1pm.

**Saturday 14 Dec**

**Dvorak, Saint-Saens, Mozart**, St Botolph's Music Society, Colchester, 7.30pm.

**Saturday 21 Dec**

**Handel: Messiah**, St Mary-le-Tower Church, Ipswich, 6pm.

**Saturday 11 Jan**

**Russian Programme**, Colchester Symphony Orchestra, St Botolph's, Colchester, 7.30pm.

**Saturday 18 Jan**

**Magnificat: Bach/Vivaldi** with period instruments, Colchester Chamber Choir, Coggeshall Church, 7pm.

**Saturday 18 Jan**

**Rossini: Petite Messe Solennelle**, Ipswich Bach Choir, Ipswich School, 7.30pm.

**Saturday 25 Jan**

**Fibonacci Sequence** (trumpet, clarinet, bassoon, violin, cello & piano), Ipswich Chamber Music Society, Ipswich School, 7.30pm.

**Sunday 26 Jan**

**Jamal Aliyev, cello**, Stour Valley Arts and Music, Constable Hall, East Bergholt, 4pm.

## THEATRE

**Saturday 30 Nov**

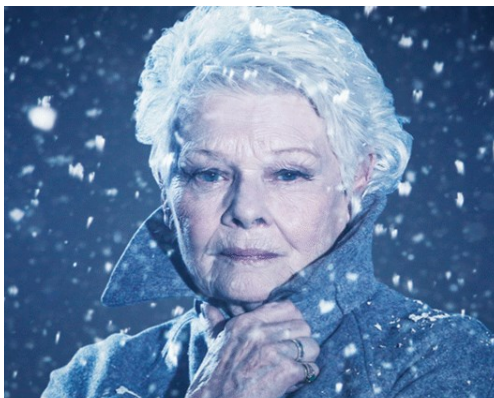
**Noël Coward: Present Laughter**, National Theatre - LL, Lakeside Theatre, Colchester, 2.30pm.

**Tue 3 to 4 Dec**

**Harold Pinter: The Homecoming**, Lakeside Theatre Colchester 7.45pm.

**Wednesday 4 Dec**

**Shakespeare: The Winter's Tale**, Branagh Theatre Company - LL, at Firstsite, Colchester, 7pm, and on 21, 20 Dec and at Lakeside Theatre.



Judi Dench: *Winter's Tale*, 4 Dec

**Thu 19 to 21 Dec**

**Sherlock Holmes & The Warlock of Whitechapel** at Headgate, Colchester, 7.30pm and matinee.

**OPERA/MUSICAL**

**Wed 11 to 13 Dec**

**Tunswick!** A comedy musical, Headgate, Colchester, 7.30pm.

**Saturday 11 Jan**

**Alban Berg: Wozzeck**, Metropolitan Opera New York - LL, Firstsite, Colchester, 5.40pm.

**Wednesday 29 Jan**

**Puccini: La Bohème**, Royal Opera House - LL, Firstsite, 7.45pm, and on 2 Feb at 2 pm and at Odeon Colchester.

**Saturday 1 Feb**

Bernstein: Porgy and Bess, Metropolitan Opera New York - LL,

**BALLET**

**Tuesday 10 Dec**

**Coppelia**, Royal Ballet - LL, Odeon Colchester, 7.15pm. and at Firstsite.

**Tuesday 3 to 7 Dec**

**Glyndebourne Touring Opera**, at Theatre Royal Norwich,

**Donizetti: L'Elisir d'amore**

**Verdi: Rigoletto** and **Handel: Rinaldo**,

More events and details  
on my website

[www.eamaa.org](http://www.eamaa.org)

Max Wilkinson

L L = live video link

**Assembly Rooms, Dedham**

Films Admission 7pm, , begin 7.30pm

**Tickets £4**

from Shakespeare House Gallery

OR [www.dedhamfilms.co.uk](http://www.dedhamfilms.co.uk)

*Refreshments available*



**The Man Who Invented Christmas (PG) 2017**

Directed by Bahrat Nalluri

Wednesday December 11 2019, 7.30 to 10pm



**Downton Abbey (PG) 2019**

Directed by Michael Engler

TBC

Wednesday January 15 2020  
7.30 to 10pm

## WEA DEDHAM BRANCH

The next series of 10 lectures entitled "Golden Age of TV Drama" will be held at the Munnings Museum, Castle Hill, Dedham from Wednesday 8th January 2020 at 10am. The lecturer is David Read.

The course will look at some of the seminal productions of the 60s, 70s and 80s that established the reputation of original TV drama as a new art form.

Each week we will look at an individual play or series in terms of its stylistic techniques and innovations. We have coffee at 10am and the lecture starts at 10.30 am and finishes at 12 noon.

If you need more information please call Ruth Higginson on 322598 or Colin Biggins on 322565.

## 2020 Village QUIZ

The annual Village Quiz for organisations or groups based in Dedham will be held on...

**Saturday 18<sup>th</sup> January 2020 in the Assembly Rooms**

7:00 for 7:30 start with SIX people per team  
and a maximum of 20 teams

Tickets will cost **£12.50 per person** and will include a light supper

There will be a bar and raffle

**All proceeds will be donated to the Ipswich branch of  
Riding for the Disabled**

*As this event is run to raise money for charity we would respectfully request that only drink purchased at the bar consumed on the evening*

**To enter a team please contact  
James or Sophie Geary 01206 323368  
jandsgeary@hotmail.com**

**Tickets are still available for the Dedham Village Quiz  
to be held in the Assembly Rooms  
on Saturday 18th January**



# Father Christmas At Hall Farm

14th & 21st December  
2pm-4pm

Visit Father Christmas in his magical grotto  
And receive a gift

Or enjoy a children's 3 course lunch on these days  
for £11.50 & visit him for free

**£3 per child**

Also join our Elf Hunt, running throughout  
December on our farm trail  
£2.50 per child  
(prize for every entrant)

For more information call 01206 323 600  
Or visit [www.hallfarmshop.com](http://www.hallfarmshop.com)



## **EARLY WARNING**

Important date for your diary

The Friends of Dedham Church are organising another

### **HORSE RACING EVENING**

**on Saturday 16th May 2020**

A fun packed evening racing your horses, fish and chip supper,  
possibly winning money

***Lots more details in the February Magazine***





# fiducia

## **The Gift of Financial Freedom this Holiday Season**

It's that time of year again. We're heading full pelt into the holiday season when we all long for quality time with loved ones but invariably end up stressed out, over-indulged and overdrawn.

For some inexplicable reason, we feel compelled to host the perfect Christmas lunch, to buy the perfect present and to make it the 'most magical time of the year'.

It's exhausting! No wonder we need a rest in January to recover our mental health and replenish our bank accounts. So, how about keeping hold of your cash this year, giving yourself – and others – the gift of financial freedom?

### **Budget and Plan**

Like anything else in life, it's best if you set yourself a budget for Christmas and plan how you will spend it. This way, it's less likely you will end up panic buying on Christmas Eve or putting yet another expense on the credit card.

### **Organise a Secret Santa**

Instead of wasting endless hours and far too much money buying everyone a gift, that they probably don't want or need

anyway, why not organise a Secret Santa for the adults in your life? Keeping the budget to a token amount of, say, £5, £10 or £20 takes the pressure off those with less disposable cash.

### **Offer Your Time**

Instead of buying a gift, why not offer your time as a present? You could babysit someone's children, help an elderly person with their garden, offer to fix something. The possibilities are endless and the gift will be so much more personal and, likely, far more appreciated!

### **Remember Charities**

For some people, the holiday season can be the worst time of the year. Lots of supermarkets run campaigns to help customers donate cans of food and other items to homeless charities. You could volunteer at a shelter or just remember to lend a few minutes of your time and a smile to someone who needs it. Or, how about donating to charity on someone's behalf, instead of a gift? It's worth noting that donations to charity receive tax-relief.

### **Set up Savings for Children**

If the children in your life, whether grandchildren or nephews and nieces are lucky enough to receive more presents than they know what to do with, why not start a savings account for them instead? A grandparent can set up a Junior ISA on their behalf, for example. Or, if you're a parent, you could ask family members for cash to put into your child's savings account.

The children won't miss the presents now, but will certainly be glad to receive the cash in the future.

### **Don't Neglect Yourself**

Gift yourself time for relaxation and contemplation. January is just around the corner and usually a time for organising finances. Perhaps you are due to submit your tax return in January or you are planning on getting to grips with your pensions, savings and investments in 2020? You will want to be refreshed enough to deal with these issues and set those long-held plans into action once the holiday season is over.

Why not take the first step now by booking yourself a financial planning

meeting in the New Year? Fiducia Wealth Management offers a free initial meeting with no obligation.

Wishing you a restful Christmas and a happy New Year!

Lauren Peters is a Chartered Financial Adviser and Senior Adviser at Fiducia Wealth Management, an independent advice firm with its head office in Dedham Colchester

[www.fiduciawealth.co.uk](http://www.fiduciawealth.co.uk) 01206 321045  
[lauren@fiduciawealth.co.uk](mailto:lauren@fiduciawealth.co.uk)

**Lauren Peters**  
**Chartered Financial Planner, FPFs**  
**Senior Financial Adviser**  
**Fiducia Wealth Management**



*Bland Landscapes Ltd*

## Standing Christmas Tree SALE

### Freshly Cut Trees While You Wait

Nordmann Fir Trees 3' to 12'

£8.00 per foot

Please call in advance to arrange a time

Tel: 01206 230882/01206 230752 | Mob: 07759142108/07901958706

Email: [blandlandscapes@outlook.com](mailto:blandlandscapes@outlook.com)

Ivydene, Frating Rd, Ardeigh, Colchester CO7 7SY

**WHITTLES**

CHARTERED ACCOUNTANTS

[www.whittles.co.uk](http://www.whittles.co.uk)

**Sound, clear advice  
Personal, practical  
approach**

Business advisory, tax, audit and  
accounting services for companies,  
charities, trusts and individuals.



The Old Exchange, 64 West Stockwell St, Colchester CO1 1HE  
T: 01206 762200 E: [mail@whittles.co.uk](mailto:mail@whittles.co.uk)

15 High Street, West Mersea CO5 8QA  
T: 01206 385049 E: [mail@whittles.co.uk](mailto:mail@whittles.co.uk)



**01206 230882**  
[www.blandlandscapes.co.uk](http://www.blandlandscapes.co.uk)

Ivydene, Frating Road  
Colchester, Essex, CO7 7SY

## Bland Landscapes Ltd

### Our services include:

Treework Specialists	All types Fencing Inc.
Felling	Equestrian Fencing
Pruning	Driveways
Reducing	Patios
Reshaping	Turfing
Stump grinding	Planting
Seasoned Logs	Grass Cutting

## MARK FAGE ARCHITECT

MODERN AND TRADITIONAL DESIGN  
RESIDENTIAL & COMMERCIAL PROJECTS  
LOCAL KNOWLEDGE AND SUCCESS

**Tel 07976 655387**      [www.markfage.com](http://www.markfage.com)  
**e mail**      [mark\\_fage@btinternet.com](mailto:mark_fage@btinternet.com)

# BAILAND

CONSTRUCTION LIMITED

**EXQUISITE ATTENTION TO DETAIL**

TOAD HALL  
THE HEATH, DEDHAM  
ESSEX, CO7 6BT  
01206 323230

**WWW.BAILANDCONSTRUCTIONLIMITED.CO.UK**  
**ENQUIRIES@BAILANDLTD.CO.UK**

YOGA

DEDHAM RETREATS

PILATES

LOU HART

MEDITATION

HOLISTIC HEALTH CENTRE  
DEDHAMRETREATS.COM

## LANGHAM PRE-SCHOOL

VILLAGE LOCATION JUST 5 MINUTE DRIVE FROM:  
HIGHWOODS, MYLAND, BOXTED, DEDHAM & GREAT HORKESLEY

2yrs +

**From Sept 2017: Up to 30  
free funded hours available**

**Come and explore...**

Langham Community Centre  
School Road  
Langham  
CO4 5PA

For more info: 07930 963638  
[www.langhampreschool.co.uk](http://www.langhampreschool.co.uk)

Company no. 07127779  
Charity Commission no. 1135120





**Tel: 01206 322674**

**Mob: 07732 039726**

Email: [nicola.pedicare@gmail.com](mailto:nicola.pedicare@gmail.com)

Web: [www.pedicarefootclinic.co.uk](http://www.pedicarefootclinic.co.uk)

**Dedicated to the care of your feet**

Also at Pedicare:

**Felicity Watts  
Reflexology**  
in need of relaxation?



Please contact Felicity for an informal chat about the benefits of Reflexology and how it can help you.

**T: 07432 098079**

**E: [fjwattsreflexology@gmail.com](mailto:fjwattsreflexology@gmail.com)**

**Relax • Restore • Revive**

**1 Threadneedle (Main) Street Dedham, Colchester CO7 6HH**



**Helen Sims Flowers**

**BEAUTIFUL FLOWERS  
FOR ALL OCCASIONS**



**T: 07899 061840**

E: [helensimsflowers@btinternet.com](mailto:helensimsflowers@btinternet.com)  
[www.helensimsflowers.co.uk](http://www.helensimsflowers.co.uk)

**DEDHAM  
TENNIS CLUB**

**f @DEDHAMENTENNIS**

2019 membership starts from 1st March.  
To become a member, please visit our website [www.clubspark.ltd.org.uk/dedhamtc](http://www.clubspark.ltd.org.uk/dedhamtc)

JUNIOR	£5
SENIOR WEEKDAY	£72
INDIVIDUAL	£106
FAMILY	£180

For more information contact:  
DEDHAM LAWN TENNIS CLUB  
THE DRIFT, DEDHAM,  
COLCHESTER, ESSEX,  
CO7 6AH

Email: [dedham-tennis-committee@googlegroups.co.uk](mailto:dedham-tennis-committee@googlegroups.co.uk)

Diesse Ltd are a specialist wall and floor tile supplier to the interior design and architectural market. Contact us if you would like to make an appointment to discuss your tiling project. There are tiles for wet rooms, kitchens, swimming pool surrounds, patio and garden areas. Our expert team have over 50 years experience to help advise you.

**Diesse Ltd Studio 3B, Dedham Vale Business Centre,  
Manningtree Road, Dedham, CO7 6BL**

**Studio Tel no. 01206 805455**

**[www.diesse ltd.co.uk](http://www.diesse ltd.co.uk)**



**Dedham Parish Magazine thanks the Advertisers for their support**

inspire. create. collaborate.

wearemost.com

e. hello@mostgroup.co.uk  
t. +44(0)1206 22 44 50  
studio house, 42 heckworth close, colchester CO4 9TB

# most.

commercial and residential refurbishment.  
agile working specialists.

## ARDLEIGH CHIMNEY SWEEP SERVICES



- Traditional and Power Sweeping
- CCTV Inspections
- Safety Certificate Issued
- Fully Insured

ANDREW SMITH

01206 231718 · 07845 249820

31 HARWICH ROAD, LAWFORD, MANNINGTREE, ESSEX CO11 2LS

## LIDDLEBUILD BRICKWORK

N.V.Q / City & Guild Qualified

All aspects undertaken:  
New Builds, Extensions, Garden Walls  
Repair, Block Paving, Slab Work

**Call for a free quote today**

**Tel: 07881 095818**

**Email: liddleiain@hotmail.com**

## LANGHAM PRIMARY SCHOOL



**EXPLORE** our potential  
**PIONEER** our talents  
**DISCOVER** our world

Recognised by OFSTED for a  
**'welcoming environment'** and a  
well planned provision which **'engages  
children's curiosity and imagination'**



Langham Primary School  
School Road, Langham,  
Essex CO4 5PB

Tel: 01206 272266

[www.langham.essex.sch.uk](http://www.langham.essex.sch.uk)



**Personal Training**

**No Joining Fee**

**Free Fitness Consultation**

**Contact Mark**

**07769703131**

**mark@fitfaff.com**



## Tree Surgeon

Blake Tree Care

**M: 07515 288736**

**O: 01787 228341**

Providing excellence in:

Tree Felling - Canopy

Reduction - Hedge

Cutting

Tree Shaping and pruning - Stump Grinding

Pollarding - Emergency Storm Damage

Free Consultation for Small and Large Jobs

Public Liability Insurance

[info@blaketreecare.co.uk](mailto:info@blaketreecare.co.uk)

[www.blaketreecare.co.uk](http://www.blaketreecare.co.uk)



**Kingsleigh**  
Property Consultants

## Sales and Lettings

Your local, family-run, independent estate agency in Dedham High Street

Telephone: **01206 940123**

Email: **sales@kingsleighresidential.co.uk**

Website: **www.kingsleighresidential.co.uk**

## THE SUN INN



A REFUGE THAT'S EASY TO FIND BUT HARD TO LEAVE,  
WHERE TIME SLOWS DOWN IN THIS RUSTIC RETREAT.

The Sun Inn, High Street, Dedham, Essex CO7 6DF

Telephone: 01206 323351

[www.thesuninndedham.com](http://www.thesuninndedham.com)



### TONY MASON SERVICES LTD



YOUR LOCAL ENGINEER FOR  
**OIL BOILER SERVICES**

AND

**GENERAL PLUMBING NEEDS**

MAINTENANCE, REPAIRS & EMERGENCY BREAKDOWN  
SERVICE CHARGE **WITH NO CALL OUT FEE**

OIL BOILER INSTALLATIONS  
&

KAMCO POWER FLUSH SERVICES PROVIDED

**CALL 01206 852798**  
**(24HR ANSWERING SERVICE)**



## FINE LINE DECORATING

**Spray Specialist in :-**

Kitchen unit resprays  
UPVC Windows  
Interior & Exterior Re-dec  
Garage Doors

07709337188

[info@finelinedec.co.uk](mailto:info@finelinedec.co.uk)

[www.finelinedec.co.uk](http://www.finelinedec.co.uk)



*Dedham Parish Magazine thanks the Advertisers for their support*

## Dedham Pharmacy

### High Street, Dedham

01206 322 109

- |  |   |
|--|---|
| <ul style="list-style-type: none"> <li><input checked="" type="checkbox"/> Emergency Contraception</li> <li><input checked="" type="checkbox"/> Shingles &amp; Chicken Pox Vaccination</li> <li><input checked="" type="checkbox"/> Flu Vaccination (NHS &amp; Private)</li> <li><input checked="" type="checkbox"/> Sore Throat Test &amp; Treat</li> <li><input checked="" type="checkbox"/> Travel Healthcare Clinic (vaccinations &amp; anti malarial supply)</li> </ul> | <ul style="list-style-type: none"> <li><input checked="" type="checkbox"/> <b>FREE</b> Prescription Collection</li> <li><input checked="" type="checkbox"/> <b>FREE</b> Review Of Your Medication</li> <li><input checked="" type="checkbox"/> <b>FREE</b> Care Home Medicine Service</li> <li><input checked="" type="checkbox"/> <b>FREE</b> Medicine Waste Disposal</li> </ul> |
|--|---|

**Monday - Friday 9am - 5.30pm**

**Saturday 9am - 5.00pm**



*Call us for a free quotation*

- Electrical Installations
- Electrical Testing
- Lighting Design
- Fire Detection Services
- 24-Hour Call out
- Response Maintenance

95 School Lane, Stratford St. Mary  
Suffolk, CO7 6LZ  
Tel: **01206 322969**  
Mob: **07534424493**  
E-Mail: [info@orwellelectrical.co.uk](mailto:info@orwellelectrical.co.uk)  
[www.orwellelectrical.co.uk](http://www.orwellelectrical.co.uk)



# Oreon Interiors



[oreonlimited@gmail.com](mailto:oreonlimited@gmail.com)

**12 Church Street**  
**Colchester**  
**CO1 1NF**  
**01206 769458**



Curtains  
Blinds  
Upholstery  
Shutters  
Wallcoverings





**Call for a free quotation**

Office: **01255 436410**

Mobile: **07939 554197**

Website: [www.spenceelec.co.uk](http://www.spenceelec.co.uk)

**24 Hour Emergency Call Out**

**All Electrical Work Undertaken  
Domestic & Commercial**

ECA / NIC EIC Approved Electrical Contractor  
Fully Insured. New Installation.

Rewires and Upgrades.

Additional Sockets and Lighting.

Garden / Garage Power and Lighting.

Full Electrical Testing and Inspection Service.

Domestic Electrical Fault Finding and Repair.

**Prompt Reliable Service**

**BUILD WITH  
COLLIERS**

**Collier & Catchpole**  
COLLIERCATCHPOLE.CO.UK

Looking for aggregates,  
paving, walling and edging?  
Go to our website and  
click on our online shop.  
**WE DELIVER!**

**GETTING YOUR GARDEN  
READY FOR SUNSHINE?**

Visit our yards in IPSWICH and COLCHESTER for a wide range of fencing, trellis, decking, paving, artificial grass, sleepers, decorative aggregates and much, much more.

With service you can expect from an independent builders' merchant which has been around for almost 200 years.

COLCHESTER 01206 715500 | IPSWICH 01473 689605



**Dedham  
Church of England  
Primary School**

*Lifelong love of learning*

A warm welcome awaits you at Dedham Primary School. Our team of dedicated teaching and support staff, school governors, parents and community work together for the benefit of all our children.

We value an inclusive culture of learning where through a broad range of opportunities each and every child is supported and challenged to reach their full potential.

We look forward to welcoming you to our school.

Headteacher: Mr David Larnar  
[www.dedham.essex.sch.uk](http://www.dedham.essex.sch.uk)  
01206 322242  
@PrimaryDedham



**DEDHAM CHURCH & TOWER TOUR**

**Visit the 16th century tower with our experienced guides and enjoy views across Dedham Vale**

From £3 per person. Family ticket (up to 5 people) from £10

Book via Parish Office ☎ **322 136**

✉ [stmaryda@gmail.com](mailto:stmaryda@gmail.com)



All aspects of building work e.g. extensions, removal of walls etc, plastering, tiling, electrical & plumbing are undertaken as we project manage your kitchen from start to finish.

# HUNTERS BROOK

*The Kitchen & Bedroom Specialist*

**01279 442432**

**sales@huntersbrook.co.uk**

"Designers & fitters covering Essex & Suffolk"

Worcester-Bosch • Baxi-Potterton • Chaffateux • Main  
**24hr CALL OUT**



## Jackson Plumbing & Heating

**01206 322063**

**mobile: 07834 612009**

**01473 214215**

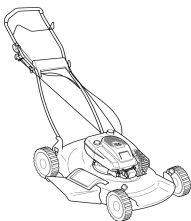
**www.jacksonplumbing.co.uk**



**GRANTS AVAILABLE OAP DISCOUNTS**



Glowworm • Vaillant • Ariston • Ferrolli • Biasi • Sime • Ideal



**Richard Kimberley Services**  
**Lawn Mower Service and Repair Centre**  
Rotary pedestrian, ride-on mowers, rotavators.  
Shear sharpening service. Welding expert.

Proven workmanship. Engineering workshop established over 30 years.  
Competitive, fast service, collection and delivery by arrangement.

Telephone: 01206 230964

Email: rks@richardkimberleyservices.co.uk

88 Hungerdown Lane, Lawford, Manningtree, CO11 2LY

# DEDHAM VALE TREE SURGERY

NPTC qualified, fully insured  
 24 hr emergency tree work  
 Hedge maintenance and reduction  
 Logs, kindling and woodchip supplied  
 Stump grinding



All tree work undertaken  
 Crown reduction and shaping  
 Crown lifting and thinning  
 Pruning and pollarding  
 Felling, sectional dismantling

Specialising in big trees in delicate situations

info@dedhamvaletreesurgery.co.uk  
 www.dedhamvaletreesurgery.co.uk

mobile 07756 811098  
 phone 01206 323056

## S. J. Smith PLUMBING AND HEATING ENGINEERS

**From an extra radiator  
 To a full heating system**



- \* Boiler changes
- \* Bathroom suites
- \* *Aqualisa, New Team*  
 & other showers
- \* Electric showers
- \* All heating and  
 plumbing repairs



FREE ESTIMATES  
 CORGI REGISTERED

22 Bullock Wood Close

**COLCHESTER  
 843 493**

## Wendy's Curtains

Professionally made to measure  
 curtains, roman blinds and soft  
 furnishings, with a wide range of  
 fabric samples.

- ☎ 01206 395996
- ☎ 07966 718 414
- ✉ info@wendyscurtains.com
- 🌐 www.wendyscurtains.com

## STEVE'S RUBBISH REMOVALS

Houses • Gardens • Sheds  
 Garages • Commercial

Licensed waste collector.  
 Free quotes

01206 322798 / 07980 204057  
 www.stevesrubbishremovals.com



## Diana M Cleaning Home and Office Cleaning



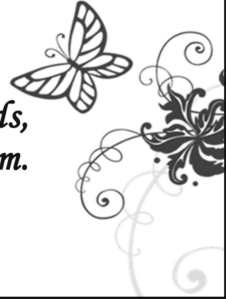
07925624123  
 dianamarinova61@yahoo.co.uk

# Riverside Designs

for all your interior design, hand finished blinds, curtains and soft furnishings. Based in Dedham.

Tel: 07966 310 206

email: [enquiries@riversidedesigns.co.uk](mailto:enquiries@riversidedesigns.co.uk)



## Labels To Love

Boutique & Designer Dress Agency



Lily & Me • Fenella • Miss Sugar • Gaby's • Miss Shortbair

Lingerie by Triumph • Royce • Spanx

Designer New & Pre-loved Clothes

Nicole Fabri • Gucci • Boss • Dior • Karen-Miller

Open Tuesday to Saturday 9.30 am - 5.30 pm

[www.labelstolove.co.uk](http://www.labelstolove.co.uk)

24 High Street, Hadleigh, Suffolk IP7 5AP

Telephone: 01473 807052



## Mather & Co

SOLICITORS

For Conveyancing + other specialised property matters. Family, Wills & Probate and Powers of Attorney.

Efficient, flexible, local, and low cost friendly service.

Free parking at:

Hill House, Grove Hill, Langham, Colchester CO4 5PJ. No parking problems just off A12.

Tel: 01206 322763

Fax: 01206 322895

[gillmather@aol.com](mailto:gillmather@aol.com)



[www.mathersolicitors.co.uk](http://www.mathersolicitors.co.uk)



As more support services become digital, it is often assumed that everyone has access to a computer. But some do not.

Please support Beacon House, Colchester, so that we can help homeless people to ac-

cess jobs, benefits and housing, or just keep in touch with families and friends.



All our services are free to those in need, but our costs include IT equipment, software, internet services and literacy support.

[www.beaconhouseministries.org.uk](http://www.beaconhouseministries.org.uk)

Bank account: 23-05-80, 24181162

**MARK'S TRAVEL SERVICE**

**AIRPORTS / LONG DISTANCE /  
LOCAL**

**6 SEATER AVAILABLE**

**DEDHAM BASED**

**TEL 07759 688813**



**HORIZON**

**LANDSCAPES  
EAST ANGLIA LTD.**

Design, Construction, Maintenance & Restoration

Tel: **01206 322 646**

Mobile: **07715 121 401**

**M.A. Everett**



For you, your family and  
your business

**gotelee**  
SOLICITORS

01473 822102

Offices in Hadleigh, Ipswich, Felixstowe  
and Woodbridge

[www.gotelee.co.uk](http://www.gotelee.co.uk)



**HILL FARM**

**LANDSCAPES**

*Landscaping &  
Fencing Contractors*

**01206 303608**

[www.hillfarmlandscapes.com](http://www.hillfarmlandscapes.com)

**HOLIDAY COTTAGE**

Long Road East

**DEDHAM**

Weeks, Weekends & Between Houses.

Tel. **01206 323 345 / 0797 9757 470**

[www.holidaycottagededham.co.uk](http://www.holidaycottagededham.co.uk)

E Mail [owlbarn@live.com](mailto:owlbarn@live.com)

**A.Slocombe  
General Builder**

Hard Landscaping,  
Roofing and Property Maintenance

Brickwork, Blockpaving Drives, Carpentry  
No job too small, for free friendly advice  
and estimates phone

**01206 322 884 / 07786 871 364**

## JP WILSON PLUMBING AND HEATING

Gas & Oil Engineer  
Bathroom Installation  
Boiler Installation  
Faults & Servicing  
Landlord Safety Certificates  
Unvented Systems  
Fully Insured

TEL: 01206 322141  
MOBILE: 07445 270703  
EMAIL: jon@jpwplumbing.co.uk  
www.jpwilsonplumbingandheating.co.uk

Chartleigh  
East Lane  
Dedham  
Essex CO7 6BE



## Your local tree specialist



SPECIALIST TREE SURGERY • ARBORICULTURAL CONSULTANCY

**07841 623027**  
**www.jftreespecialist.com**



FULLY INSURED AND COUNCIL APPROVED  
FREE ESTIMATES AND EXPERT ADVISE

01206 231720 • INFO@JFTREESPECIALIST.COM

### What we do

- ✓ Tree Surveys
- ✓ Planting and Aftercare
- ✓ Fruit Tree Pruning
- ✓ Felling and Dismantling
- ✓ Tree Monitoring
- ✓ Hedge Cutting
- ✓ Stump Removal
- ✓ Fencing
- ✓ Landscaping
- ✓ Logs and wood chip supplied
- ✓ Mobile sawmill service
- ✓ Mowing contracts
- ✓ Crown Reduction, Lifting, Thinning and Cleaning



### BIRKFIELD COMPUTER SERVICES

also offering

### SENIOR COMPUTING SERVICES.

Help for the more mature user.

We can supply refurbished systems.

Desktops/Laptops repaired.

Problems sorted, bugs removed.

Systems speeded up - **help given.**

W10 can look and run like Windows 7



**Call Michael Hockley**

**01206 298479**

**birkfield@btinternet.com**

# the treatment rooms

AT MAISON TALBOOTH

Spa packages | Massages  
Facials | St. Tropez tanning

Open all day, every day.  
Call to book 01206 322367 or visit  
[www.milsomhotels.com/spa](http://www.milsomhotels.com/spa)



**bacp** | professional standards authority  
accredited register

Registered Member 47972  
MBACP

## COUNSELLOR & COACH

**Patrick Lyttle MSc PGDip (Oxon)**

Colchester, Dedham & East Bergholt

**07887 982 837**

**patrickhlyttle@gmail.com**



## Manningtree Body Repair Centre

**Riverside Avenue West  
Lawford  
Manningtree  
Essex  
CO11 1UN**

**Tel / Fax: (01206) 393 191**

All Vehicle Body Repairs & Refinishing work undertaken including:

- Insurance Work, MOT welding, Panel Beating and Spraying
- Assistance given to "Non-Fault" Third Party Insured
- Collections and Delivery



- CCTV
- Intruder Alarms
- Security Lighting
- Door & Gate Entry
- Aerials & Satellites
- Home Entertainment

**For a Free, No Obligation Quote**

**Please Contact Us on: 01206 322071**

**07778 931357**

**[www.mjssystems.co.uk](http://www.mjssystems.co.uk)**

## CHARTERED ACCOUNTANT

Dedham based

**Accounting & Tax Services and Financial Consultancy  
for small businesses  
Affordable rates**

Accounts, self assessment, corporation tax, Quickbooks & Sage accounting software etc.

Call Philip Strangward on 01206 584913 or 07880 550000  
for free initial consultation  
[www.philipstrangward.co.uk](http://www.philipstrangward.co.uk)



## FISHER JONES GREENWOOD SOLICITORS

Legal advice for you, your family and your business



With top tier Legal500 and Chambers & Partners rankings, our friendly and experienced team offer a full range of commercial and individual legal services, no hidden costs, Saturday opening hours and fixed fee packages.

**Get in touch with the local experts today to see how we can help.**

[www.fjg.co.uk](http://www.fjg.co.uk) ■ 01206 835300 ■ [info@fjg.co.uk](mailto:info@fjg.co.uk)

Charter Court ■ Newcomen Way ■ Colchester Business Park ■ CO4 9YA ■ Free parking available

## THE DEBBIEMILLARSCHOOL OF DANCE

CLASSICAL BALLET • TAP • MODERN • THEATRE • DISCO

**Dance classes for ALL ages & abilities**  
For fun, recreation, progressive ISTD examinations

**Toddlers  
Pre-school  
Children  
Teens  
Adults**

**Ballet & Tap  
Modern  
Jazz  
Disco/Street  
Musical theatre**



**Tel: 01206 230806      Email: [debbie@debbiemillar.co.uk](mailto:debbie@debbiemillar.co.uk)**  
**[www.debbiemillarschoolofdance.co.uk](http://www.debbiemillarschoolofdance.co.uk)**



## R J Woods & Co Accountants

- Accounts
- Self Assessment Returns
- Company Tax Returns
- VAT
- Book-keeping
- Tax Planning
- Payroll

Confidential advice  
Free initial consultation  
Call Rob or Tracy Woods

**Tel: 01206 322 604**

Email: [info@rjwoodsandco.com](mailto:info@rjwoodsandco.com)  
Website: [www.rjwoodsandco.com](http://www.rjwoodsandco.com)



Orchard Barns is a small nursery group of two unique nurseries located in the beautiful villages of Ardleigh and Stratford St. Mary offering outstanding care and education for children from 3 months to 5 years.

Come and visit us, it really is the best possible way to learn about us and get a true feel for these exceptional nurseries.



CALL FOR MORE INFORMATION  
01206 231911 for Ardleigh  
01206 323093 for Stratford  
[www.orchardbarns.co.uk](http://www.orchardbarns.co.uk)  
email: [info@orchardbarns.co.uk](mailto:info@orchardbarns.co.uk)

Open to All  
regardless of  
catchment area



From age  
2 years...



\*\*\* Longer Opening Hours Now Available \*\*\*



[www.ardleighpreschool.co.uk](http://www.ardleighpreschool.co.uk)

Tel: 07517 430114



Ardleigh Village Hall, Station Road, Ardleigh, Essex, CO7 7RS

## DEDHAM IRONING SERVICE

TIRED OF IRONING?  
Let us do it for you!



Ring Helen on  
**01206 322 554**



## Britannia Flooring

CARPET FITTING  
SUPPLY & INSTALLATION  
CARPET & VINYL SPECIALIST  
FLOORING ACCESSORIES

Tel: 07740 829 499 - 07933 157 121

[www.britanniaflooring.co.uk](http://www.britanniaflooring.co.uk)  
(Based In Dedham)

**JANE BURTON**

*TRADITIONAL FLOORING*  
Carpet, Stone, Wood, Amtico,  
Slate & Marble, Vinyl, Rugs

*Designed to your personal requirements*  
Welms, Lamberts Lane, Great Tey, COLCHESTER.

Tel: (01787) 222 770 Fax: (01787) 222 760

Your natural  
choice for floor  
coverings

**DEDHAM'S EAGER BEAVER  
HANDY MAN SERVICE**



- \* Grass Cutting
- \* Hedging
- \* Garden Maintenance

**ANY JOB YOU HATE  
WE CAN DO**

**Ring Philip: 07939 250 018**  
**After 6pm 322 554**

**HUNNABALL FUNERAL SERVICE**

York House, 41 Mersea Road,  
Colchester, CO2 7QT



*We are an established family firm  
dedicated to upholding the traditional  
values of respect and dignity and*

Tel: (01206) 760 049 (24Hrs)  
For immediate personal attention



**The Essex Lottery** is a weekly lottery run by  
Essex County Council to help the county's charities

**Sixty percent** of ticket sales goes to good causes  
that benefit Essex residents – more than double the proportion for the  
National Lottery. 50p from every £1 goes to the good cause chosen by  
the lottery player and 10p goes into a central fund for smaller causes.  
Local charities or good causes can register free of charge.

More details online: [www.essexlottery.co.uk](http://www.essexlottery.co.uk)



Accredited & HCPC Registered Podiatrists  
**THE FOOT CLINIC @ DEDHAM**

Dedham Doctors Surgery, Roman Place, Manningtree Road,  
 Dedham, CO7 6DU.

Don't suffer with foot problems, aches and pains - book an appointment with one of our podiatrists for a thorough foot health check.

*Providing individual and personal care across Essex since 1985.*

**01206 854300**

[www.colchesterfootclinic.co.uk](http://www.colchesterfootclinic.co.uk)    [info@colchesterfootclinic.co.uk](mailto:info@colchesterfootclinic.co.uk)

**I.C.P. PLUMBING & CENTRAL HEATING LTD.**

*Installation, breakdown, service, maintenance*  
*Natural Gas, Oil & LPG specialists*  
**GAS SAFE REGISTERED**



**Contact Ian Phillips on:                    07885 228 646 (mobile)**

**BOILER SERVICE or BREAKDOWN 07885 228 646**

*Our boiler specialist provides a breakdown and maintenance service*

**Victoria Baker**  
 PILATES

Personally designed courses to improve posture, joint alignment, movement and strength.  
 Group and Individual sessions in a private, comfortable studio.

Cedar Building, Foxash Estate  
 Harwich Rd, Lawford  
 Colchester CO11 2LR



office 01206 322244  
 mobile 07887 987280  
[www.victoriabakerpilates.com](http://www.victoriabakerpilates.com)



## DEDHAM OSTEOPATHY

**Luke Jackman Bsc Hons Ost**  
**Registered Osteopath**

*Dedicated to getting you better*

Tel: 01206 322836/07974 144593  
[www.dedhamosteopathy.co.uk](http://www.dedhamosteopathy.co.uk)

Osteopathy and Western Medical Acupuncture clinic ideally located in the heart of the Dedham countryside, providing treatment for you and your family.

- Back pain and sciatica
- Neck and shoulder Pain
- Pain & Stiffness from Arthritis
- All joint, muscle/ligament strains
- Tennis/ Golfers Elbow
- Trapped nerves
- Tendonitis
- One hour initial appointment
- On-site free parking
- Open weekdays, evenings and weekends



### PROFESSIONAL RESIDENTIAL DECORATING

Family run  
Fully insured  
Exterior & Interior  
Domestic & Commercial  
Free competitive estimates  
From small single rooms to whole house

t. 01206 679 154  
[info@bgpainters.co.uk](mailto:info@bgpainters.co.uk)  
[www.bgpainters.co.uk](http://www.bgpainters.co.uk)



## Dedham Vale Homecare Ltd

*'Care with Integrity'*

**TAILORED CARE • MEAL PREPARATION • SUPPORT TO APPOINTMENTS  
LIGHT HOUSEWORK AND LAUNDRY • TRIPS OUT • SHOPPING**

Providing support, companionship & care to people in their own homes.

A bespoke service to meet identified individual needs with dignity and privacy.

[www.dvhc.co.uk](http://www.dvhc.co.uk)  
[info@dvhc.co.uk](mailto:info@dvhc.co.uk) 01206 299683

# PENROSE & PARTNERS VETERINARY SURGEONS

ALL CONSULTATIONS BY APPOINTMENT  
COMPREHENSIVE SERVICE INCLUDING 24HRS EMERGENCY

PEELER'S END  
UPPER STREET  
STRATFORD ST MARY CO7 6LW  
**TEL: (01206) 323 414**

70 BRINKLEY LANE  
HIGHWOODS  
COLCHESTER CO4 9XE  
**TEL: (01206) 842 608**

## Essex & suffolk PEST SOLUTIONS



Your local pest control experts  
for home & business

- Free advice, fast response
- Highly accredited (NPTA)
- Fully qualified & insured
- Discreet — unmarked vehicles

Tel: 01473 328092 (Holbrook)  
Email: info@eandspestsolutions.co.uk

## Pattern Perfect Ltd.

Painting, Decorating & Property Maintenance

BOOK NOW FOR BIGGER DISCOUNTS

**01206 396386**

**07876 030073**

All interior and  
exterior projects  
large or small  
repairs  
makeovers  
redcoration  
insurance work



City & Guilds  
Qualified



Fully Insured  
FREE Estimates  
Affordable prices  
Professional quality  
Discounts for local people

www.patternperfect.co.uk  
patternperfect@hotmail.com

36 Munnings Way, Lawford, Essex CO11 2LQ

## Richardson & Rothwell



184271

Plumbing and Heating Limited  
Unit 1, Manningtree Road, Dedham

**Make us your first call for plumbing & heating requirements.**

**We are your reliable local plumbers. We undertake all plumbing works from heating systems and bathroom suites to solar heating, air source & ground source heat pumps.**

**We offer a free quotation service so please call us to find out more details.**

Tel: 01206 323732 Fax: 01206 323735 email: [steve@richardsonandrothwell.co.uk](mailto:steve@richardsonandrothwell.co.uk)

## Andrew Ablett Servicing & Repairs

Foxash Workshop,  
Foxash, Lawford, CO11 2LR

**TEL: 07917 223274**

Servicing, Repairs, Diagnostics  
Cars - Vans - Motorcycles

## BED & BREAKFAST

LOVELY GEORGIAN HOUSE  
CENTRE OF DEDHAM

Tel: Sophie 01206 323368  
E-mail: jandsgeary@hotmail.com

## Leisure Hire



### Marquee and Equipment Hire

- Marquees erected on most surfaces •
  - Awnings • Walkways •
- Extensions to Buildings • Linings •
  - Lighting • Furniture •
- Flooring & Staging • Heating •

Summer or Winter  
Weddings Anniversaries Corporate

*Brochure upon request*

**(01206) 242 196**  
leisurehire@gmail.com

Mobile

## fresh fish shop



**Dedham High street**

**THURSDAY 2pm - 2.30pm**

Straight from Lowestoft fish market!  
A wide selection of fresh fish, smoked  
fish and seasonal shell fish.

**Every Thursday**  
**2pm- 2.30pm**

by the Dedham memorial

Deliveries also available in the  
Dedham area on Thursdays.



**303104 or 07967755771**



Steve Hutley (BCCSDip.CanBhvPrac)  
DOG BEHAVIOURIST

Website: [www.stevehutleydogrehab.co.uk](http://www.stevehutleydogrehab.co.uk)

Facebook: 'Rehabilitation and Training'

Email: [steviehut@yahoo.co.uk](mailto:steviehut@yahoo.co.uk)

DOES YOUR DOG POSSESS THE  
FOLLOWING BEHAVIOURAL PROBLEMS?

Dog on dog aggression?; People aggression?  
Lead Pulling?; Constant barking?; Fears or phobias?  
Jumping Up?; Separation Anxiety?; Resource Guarding?

If you answered YES to ANY of these questions,  
then please don't hesitate!

**Give me a call on: 07859879559.**

## Nigel Bruce Industrial & Domestic ELECTRICIAN

'The Swift', Upper Street,  
Stratford St Mary,  
Colchester CO7 6JW

**Tel: (01206) 322 751**

travel counsellors



With us...it's personal

Travel, tailor made for you, with care

01206 809220

sarah.yandell@travelcounsellors.com

www.travelcounsellors.co.uk/sarah.yandell



preschool

30 funded hours for 3 & 4 year olds  
15 funded hours for eligible 2 year olds  
8.45am to 3.00pm (term time only)

JOIN US FROM 2 YEARS OLD

OFSTED  
OUTSTANDING

VILLAGE LOCATION JUST OFF THE A12, WITH A  
WONDERFUL GARDEN AND OUTSIDE CLASSROOM.



TEL : 01206 322466

admin@abcpreschoolstratford.co.uk

www.abcpreschoolstratford.co.uk

CHARITY NO: 1159203



Your local, independent fuel supplier



Heating Oil



Aga Cooker  
Fuel



Gas Oil &  
Diesel



Lubricants  
& AdBlue®



2018  
Gold  
Trusted  
Service  
\*\*\*\*\*  
feefo



www.rix.co.uk



01953 457057

## P.J. SAMPSON BUILDERS

COMPLETE BUILDING SERVICE

30 Years' Experience

Tel: 01206 230619

66 Tile Barn Lane Lawford

Brick work Specialist  
Painting & Decorating  
Plastering and Carpentry  
Plumbing & Electric's  
Roofing

All Property Maintenance



# Cakes by *Abi*

[www.abisartoncakes.webs.com](http://www.abisartoncakes.webs.com)

*Creative bespoke cakes  
which taste as stunning as they look.*

*Formerly a Pastry Chef at Claridge's specialising in  
stylish cakes and patisserie for all occasions. Based in Dedham.*

**Mobile: 07870217003 Email: [abisarton@gmail.com](mailto:abisarton@gmail.com)**



**fiducia**

wealth management & wealth preservation



*fidelity fides  
fiduciary fiducia*

We are delighted to announce that we have been awarded corporate chartered financial planner status.

This is the accepted 'gold standard' for UK financial planning firms and reinforces our position among the elite practices within the UK.

We are also proud to have been shortlisted once again for prestigious national awards.

*If you would like more information about the services we provide, we would be pleased to hear from you.*

**Fiducia Wealth Management**  
Dedham Hall Business Centre  
Brook Street, Dedham  
Colchester CO7 6AD

**T: 01206 321045**  
**E: [email@fiduciawealth.co.uk](mailto:email@fiduciawealth.co.uk)**  
**W: [fiduciawealth.co.uk](http://fiduciawealth.co.uk)**

Authorised and regulated by the Financial Conduct Authority. FCA No. 408210

## THE Munnings ART MUSEUM

DEDHAM • ESSEX

### OPENING TIMES

23 March - 3 November 2019 2pm-5pm,  
Wednesday to Sunday and Bank Holiday Mondays  
Adults £8 (inc seniors) Children £1 Concessions  
for students and National Art Pass holders

- Group bookings welcome • Car and coach parking
- Cafe and shop
- See website for 2019 events and booking details

[www.munningsmuseum.org.uk](http://www.munningsmuseum.org.uk)  
[enquiries@munningsmuseum.org.uk](mailto:enquiries@munningsmuseum.org.uk)  
01206 322127



### Behind the Lines:

#### ALFRED MUNNINGS WAR ARTIST, 1918

Sir Alfred Munnings forged much of his early reputation from time spent as a war artist in France during 1918. In 2019, for the first time in 100 years, 41 paintings by Munnings are returning together from the Canadian War Museum, Ottawa. In this once-in-a-lifetime display the finished paintings will be shown side by side with the surviving sketchbooks, from the museum's own collection, that inspired them. An additional 150 of Munnings' life's works will be hung chronologically throughout the museum to give a sense of the man and his art.